



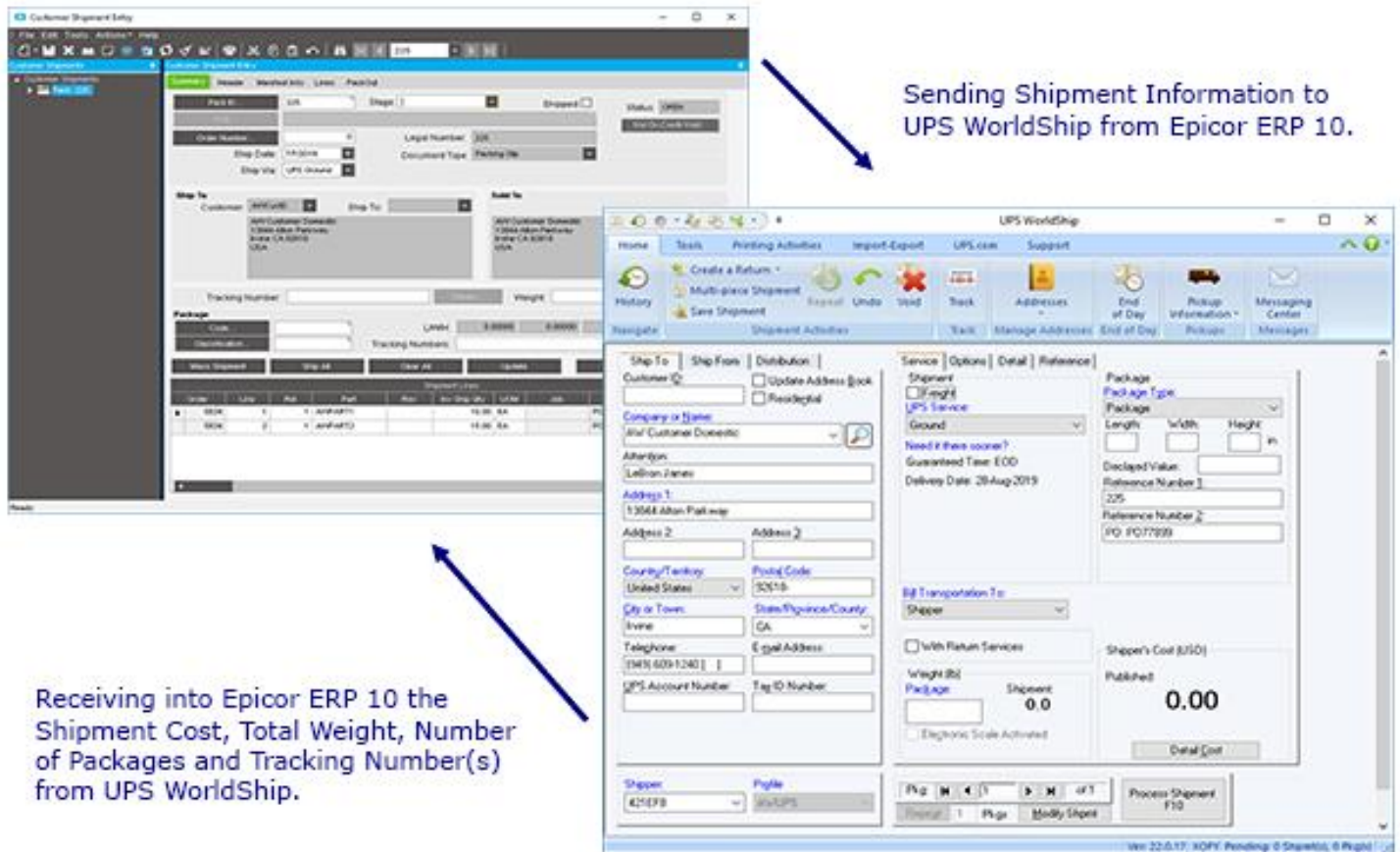
Delivering Exceptional Services & Software Every Time



AdvancedWare is Pleased to Present AWUPSInterface for Epicor ERP 10 - \$4,000

The AWUPSInterface product automatically loads from your Epicor 10 system all the information required by UPS WorldShip for a shipment. Once you complete the shipment in the UPS WorldShip system, all the information such as Shipment Cost, Total Weight, Number of Packages, and Tracking Number(s) are then automatically loaded into your Epicor 10 system. AWUPSInterface streamlines the shipment process and eliminates errors caused by having to maintain redundant customer address information.

Below, you can see the flow of the AWUPSInterface process. In one simple step, the information is automatically loaded into the UPS WorldShip system and is ready to be processed. Then, with a click of the mouse, the information is automatically loaded from UPS WorldShip into your Epicor 10 system.



Our Turnkey Approach: For the price of \$4,000, AWUPSInterface includes the combination of products and services needed for your company to be up and running live. We include the installation and setup of AWUPSInterface on your system and full integration to your release of Epicor 10, even if you have customization.

The Bottom Line: With AWUPSInterface, your users will be able to ship directly from your Epicor 10 system using UPS WorldShip and capture all the required information in a snap. Best of all, AWUPSInterface provides an unlimited license to run on as many shipping stations as you like.



Contact Us

Phone : (949) 609-1240
Address : 13844 Alton Parkway, Suite 136, Irvine, CA 92618

E-Mail : info@advancedware.com
Web : www.advancedware.com